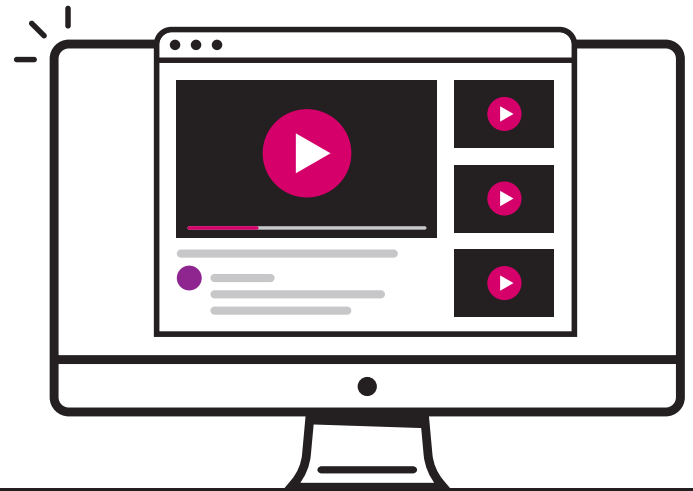


THE SMARTER

# VIDEO PLATFORM

FOR YOUR ORGANIZATION



Video is an essential tool for learning and development. However, if not managed and used effectively, video can be a passive medium that yields limited benefits for your students. **EchoVideo** is the first video platform designed to foster **inclusive, accessible and engaging video-based learning**.

## COMPREHENSIVE WITHOUT COMPLEXITY

Only EchoVideo combines video content management with training capture and active learning to increase employee success. The platform provides the easiest and most affordable solution for recording, live streaming, managing, and sharing video at any scale.

## WORKS THE WAY YOUR EMPLOYEES DO

Dynamically, that is, with a modern design intended specifically to support training activities. Even for non-technical users. On any device. At any time.

## TRANSFORMS PASSIVE VIDEO INTO ACTIVE LEARNING

With EchoVideo's integrated social learning and learner response elements, managers have seen engagement increase up to seven-fold. Only EchoVideo delivers this active learning experience to improve learning.

## PROVIDES DATA ABOUT ENGAGED LEARNING THAT NO ONE ELSE CAN

EchoVideo provides insights into learning behaviors through dashboards and reports that managers can use to identify at-risk knowledge gaps and refine materials.

## PROVEN EXPERIENCE AND LEADERSHIP MATTERS



**2 MILLION** learners per year



**7 TIMES** more engagement



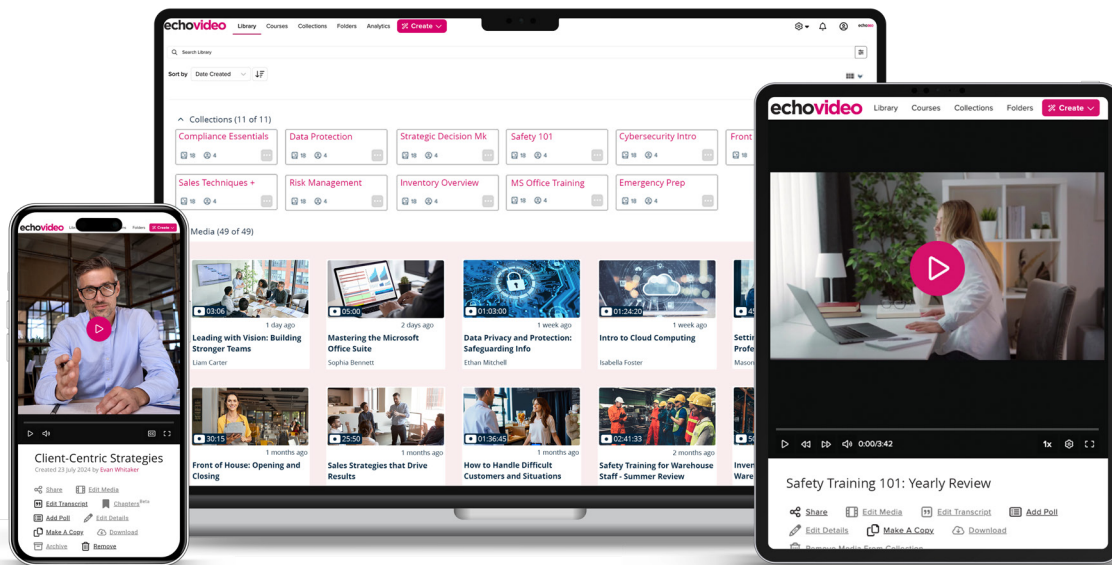
**1,200** locations



**22 MILLION** views per term

## WAYS TO USE ECHOVIDEO

Training Content Capture	Hybrid Workplace
Video Management	Employee Assignments
Video Accessibility	Meeting Engagement
Online & Blended Learning	Live Streaming



# EchoVideo combines video management with lecture capture and active learning to increase success.

## RECORDING AND STREAMING

- ◀ One-touch, on-demand capture in LMS, in class, offline, Windows, Mac, web and mobile
- ◀ Fully-automated lecture capture and streaming
- ◀ Record any combo of screen, voice and camera – up to four 1080p channels
- ◀ Software or hardware capture options -all built and supported by Echo360

## VIDEO MANAGEMENT

- ◀ Easy to find, edit, publish and caption recordings
- ◀ Deep integration with LMS workflows
- ◀ Automatic Speech Recognition (ASR) and closed captioning
- ◀ Share video publicly, privately, 1:1 or 1:many
- ◀ Delegated administration with multi-level hierarchy
- ◀ Organization customization to automatically watermark or add B-roll to videos
- ◀ Unlimited video storage

## VIDEO LEARNING & ENGAGEMENT

- ◀ Variable speed playback, searchable transcripts and superior closed captioning
- ◀ Learner bookmarking, annotation, note-taking contextually linked to content
- ◀ Interactive online discussion with threaded comments
- ◀ Real-time polling and integrated assessment
- ◀ Ability for learner to flag confusion

## ANALYTICS

- ◀ Course dashboards to measure engagement
- ◀ User dashboards to assess learner performance and identify knowledge gaps
- ◀ Automate video assignment grading by integrating LMS with LTI 1.3 protocol
- ◀ Administrator dashboards to plan ahead and assess ROI
- ◀ Proactive alerting to notify admin of potential problems for quick resolution